

cyclohepta-1,2,4,6-tetraene (15). The cyclization model and the ring expansion model thus make strikingly different predictions.¹⁵ Irradiation of (*o*-deuteriophenyl)diazomethane gives first (*o*-deuteriophenyl)methylene (11, two rotamers) and then 14 and 15. Subtraction of the infrared spectrum of 14 from the infrared spectrum of the mixture of 14 and 15 gives the spectrum of 15.¹⁶ The identity of 15 is established by independent synthesis. Irradiation of (*p*-deuteriophenyl)diazomethane gives (*p*-deuteriophenyl)methylene (16) and then 5-deuteriocyclohepta-1,2,4,6-tetraene (17). The infrared spectrum of 17 is different from that of either 14 or 15. Irradiation of (*m*-deuteriophenyl)diazomethane gives (*m*-deuteriophenyl)methylene (18) and then simultaneously 15 and 17. Subtraction of the infrared spectrum of 17 from that of the mixture of 15 and 17 gives an infrared spectrum of 15 identical with that from 11. The observation of a common product from 16 and 18 and from 11 and 18 again illustrates the point that cyclization of the aryl methylenes to the bicycloheptatrienes is inconsistent with the results.

The data presented above make it clear that the product formed in the thermolysis and photolysis of phenylmethylene is cyclohepta-1,2,4,6-tetraene.

Acknowledgment. This research was supported by Grant CHE79-00964 from the National Science Foundation and by Grant GM24427 from the National Institute of General Medical Sciences, National Institutes of Health.

Registry No. 1, 766-91-6; 2, 3101-08-4; 3, 3496-32-0; 4, 3282-32-4; 5, 42270-91-7; 6, 52783-93-4.

(15) A ring-expansion, cyclization mechanism leading to bicycloheptatrienes can also be considered. This mechanism has been excluded for 1-naphthylmethylene and 2-naphthylmethylene, which form bicycloheptatrienes by cyclization.⁵ The deuterium-labeling data require ring expansion as a first step.

(16) The subtraction of infrared spectra was accomplished with a Perkin-Elmer Data Station coupled to a 580-B spectrometer.

Acute Bonding Deviation in Square-Planar d^8 Palladium(II) Complexes¹

George R. Newkome,* Frank R. Fronczek, V. K. Gupta,^{2a} Wallace E. Puckett, Daniel C. Pantaleo,^{2b} and Garry E. Kiefer

Department of Chemistry, Louisiana State University
Baton Rouge, Louisiana 70803

Received November 23, 1981

The square-planar coordination of d^8 palladium(II) complexes has been well documented;³ further, it has been assumed that with bidentate 2,2'-bipyridine ligands, coordination is restricted to the orthogonal N electrons.⁴ In the case of dichloro(2,2'-bipyridine)palladium(II), these assumptions are quite valid;⁵ however, with 6,6'-disubstitution on bipyridine, herein described, drastic deviation from an overall planar configuration is established.

(1) Chemistry of Heterocyclic Compounds. Part 78. Previous related paper in this series: Newkome, G. R.; Kohli, D. K.; Fronczek, F. R. *J. Am. Chem. Soc.* **1982**, *104*, 994.

(2) (a) On leave from University of Delhi, Delhi, India, 1980-1981. (b) On leave from Bloomsburg State College, Bloomsburg, PA, 1980.

(3) Cotton, F. A.; Wilkinson, G. "Advanced Inorganic Chemistry", 3rd ed.; Interscience: New York, 1972; p 994. Huheey, J. E. "Inorganic Chemistry: Principles of Structure and Reactivity"; Harper and Row: New York, 1972; p 375.

(4) Brandt, W. W.; Dwyer, F. P.; Gyarfás, E. C. *Chem. Rev.* **1954**, *54*, 959.

(5) Kelly, E. A.; Bailey, P. M.; Maitlis, P. M. *J. Chem. Soc., Chem. Commun.* **1977**, 289.

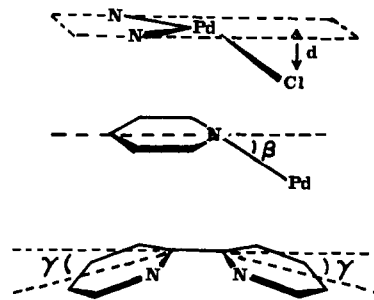
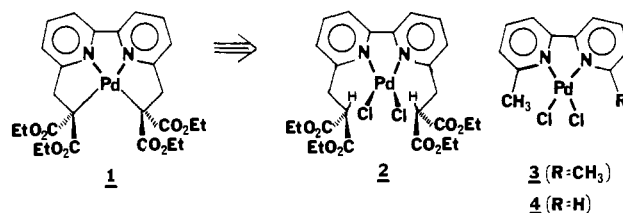


Figure 1. Molecular distortions for (bipyridine)palladium(II) complexes.

Table I. Critical Measurements for the Complexes

	2	3	4
Pd-Cl(1), Å	2.283 (1)	2.287 (1)	2.299 (1)
Pd-Cl(2), Å	2.286 (1)	2.292 (2)	2.299 (1)
Pd-N(1), Å	2.048 (2)	2.062 (4)	2.063 (2)
Pd-N(2), Å	2.040 (2)	2.050 (4)	2.023 (2)
Cl(1)-Pd-Cl(2), deg	87.90 (3)	86.32 (5)	88.54 (3)
N(1)-Pd-N(2), deg	79.88 (9)	80.0 (2)	80.1 (2)
N(1)-Pd-Cl(1), deg	96.15 (7)	95.9 (1)	98.17 (6)
N(1)-Pd-Cl(2), deg	168.87 (7)	167.0 (1)	173.19 (6)
N(2)-Pd-Cl(1), deg	171.16 (7)	172.0 (1)	166.39 (7)
N(2)-Pd-Cl(2), deg	94.62 (7)	96.2 (1)	93.70 (6)
d_1 , Å	0.315 (1)	0.277 (2)	0.538 (1)
d_2 , Å	0.386 (1)	0.496 (1)	-0.110 (1)
β_1 , deg	18.5	18.8	7.3
β_2 , deg	18.7	16.8	15.2
γ_1 , deg	10.2	7.5	6.9
γ_2 , deg	10.1	8.5	6.7

Recently we reported the preparation of mono-⁶ and dinuclear⁷ complexes of bipyridine macrocycles as well as the synthesis and biochemical studies of a novel series of stable palladium(II) complexes (1) containing two *cis*-carbon-metal σ bonds.⁸ In light



of the high activity of 1 toward *in vitro* nicking and binding events in DNA,⁹ we needed to acquire a better molecular picture of not only 1 but also its immediate precursors. The synthesis of 1 proceeds via a stepwise bond-making sequence initiated by complexation of the ligand with either PdCl₂ or PdCl₂(C₆H₅CN)₂.

The orange crystalline complex 2 was characterized by an X-ray crystal structure determination.¹⁰ The geometry of 2 is most unique in that the best plane of the four donor atoms surrounding

(6) Newkome, G. R.; Kohli, D. K.; Fronczek, F. R. *J. Chem. Soc., Chem. Commun.* **1980**, 9. For representative examples also see: Weakly, T. J. R. *Acta Crystallogr., Sect. B* **1978**, *B34*, 281. Bushnell, G. W.; Khan, M. A. *Can. J. Chem.* **1974**, *52*, 3125. Butcher, R. J.; Simm, E. *Inorg. Chem.* **1977**, *16*, 2334.

(7) Newkome, G. R.; Kohli, D. K.; Fronczek, F. R.; Hales, B. J.; Case, E. E.; Chiari, G. *J. Am. Chem. Soc.* **1980**, *102*, 7608.

(8) Newkome, G. R.; Onishi, M.; Puckett, W. E.; Deutsch, W. A. *J. Am. Chem. Soc.* **1980**, *102*, 4551.

(9) Simpson, J.; Newkome, G. R.; Deutsch, W. A. *Biochemistry* **1981**, submitted for publication.

(10) Crystal data for 2: C₂₆H₃₂N₂O₈PdCl₂; mw 677.85; monoclinic; space group P2₁/n; a = 12.246 (2), b = 19.644 (13), c = 12.340 (2) Å; β = 97.56 (2)°; Z = 4, d_c = 1.530 g cm⁻³, μ (Mo K α) 8.52 cm⁻¹; intensities were recorded on an Enraf-Nonius CAD-4 diffractometer and merged to give 3091 unique observed reflections [$F > 3\sigma(F)$], R = 0.031. This structure, as well as the others, were solved by the heavy-atom method and refined by full-matrix least-squares methods.

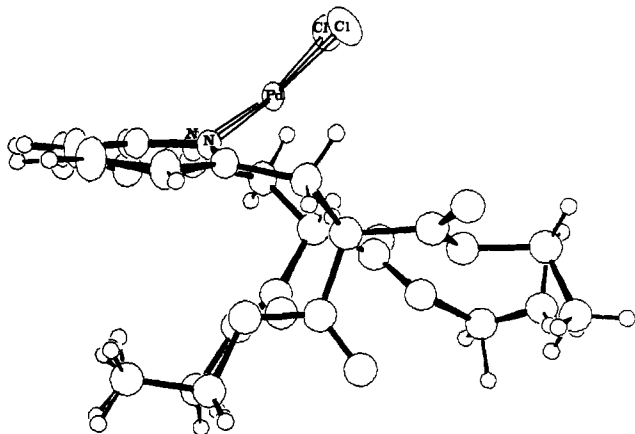


Figure 2. ORTEP drawing of the side view of dichloro[6,6'-bis[1''-(2'',2''-dicarboxy)ethyl]-2,2'-bipyridine]palladium(II) (2).

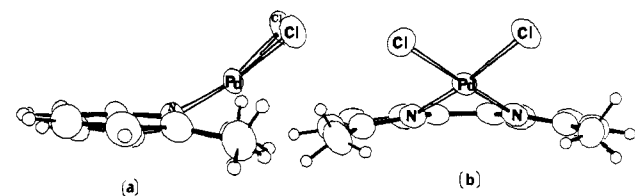


Figure 3. ORTEP drawing of the side (a) and front (b) views of dichloro(6,6'-dimethyl-2,2'-bipyridine)palladium(II) (3).

the metal is acutely bent by ca. 40° out of the best plane of the bipyridine ligand. This complex also exhibits other unexpected molecular distortions. These can be described by the following definitions: (1) the *out-of-plane distortions of the coordination plane* (d_1 and d_2) can be quantified by the perpendicular distances of the two chloride atoms from the plane defined by Pd and the two N-donor atoms (Figure 1). A positive sign for d is chosen to be a distortion that *increases* the distance between the chlorine atoms and the substituent atom at the 6 position on each pyridine ring. If $d_1 = d_2$, a pure pyramidal distortion of the metal would be indicated. (2) *The angle β for each aromatic ring is a measure of the acute tilt of the ring away from the expected coordination geometry.* It is defined as the acute angle that the Pd-N bond makes with its orthogonal projection upon the plane. (3) *The angle γ is a measure of the distortion of the bipyridine ligand itself from its expected planar geometry.* It is defined for each pyridine ring as the acute angle formed by the connecting bipyridine C-C bond and its orthogonal projection onto the plane of the ring. Table I lists these quantities as well as other structural features of importance for complex 2.

In complex 2, the metal is distorted toward pyramidal coordination, as specified by the similar positive values of d_1 and d_2 , the aromatic rings are tilted by an average 18.6° away from their expected geometries, and the bipyridine ligand itself is "bowed" away from perfect planarity by a total angle of 20.3° ($\gamma_1 + \gamma_2$).¹¹ Furthermore, neither ring is strictly planar in that each has a slight pucker [av deviation from a best plane; 0.026 (2) and 0.032 (2) Å for rings 1 and 2, respectively] in a pseudochair fashion (Figure 2). In order to gain better insight into these unexpected distortions, less cumbersome Pd(II) complexes were prepared.

Complex 3¹² is unencumbered by large ester substituents but

(11) The bowing of a dipyrindine moiety by $\gamma_1 = \gamma_2 = 8^\circ$ takes ca. 1.85 kcal/mol as calculated by the ab initio method (STO-3G): Baker, G. R. Louisiana State University, unpublished results.

(12) Crystal data for 3: $C_{12}H_{12}N_2PdCl_2$; mw 361.54; monoclinic; space group $P2_1/n$; $a = 10.928$ (2), $b = 8.794$ (2), $c = 13.630$ (2) Å; $\beta = 94.70$ (2) $^\circ$; $Z = 4$, $d_c = 1.872$ g cm $^{-3}$, μ (Mo K α) 20.3 cm $^{-1}$; intensities were recorded on an Enraf-Nonius CAD-4 diffractometer and merged to give 1663 unique observed reflections [$F > 3\sigma(F)$], $R = 0.034$. The sample crystal contained a small (ca. 8%) substitutional disorder involving the compound with a bromo substituent at C9.

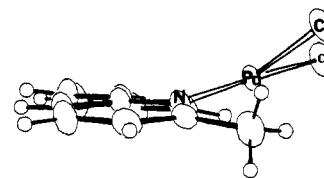


Figure 4. ORTEP drawing of the side view of dichloro(6-methyl-2,2'-bipyridine)palladium(II) (4).

is strikingly similar to 2 (see Table I, Figure 3). The aromatic rings exhibit a similar slight puckering as well with average deviations of 0.027 (2) and 0.023 (2) Å. In complex 4,¹³ an obvious difference from 2 and 3 exists (Table I, Figure 4) in that d_1 and d_2 have opposite signs, indicative of a distortion toward a tetrahedral geometry. Also, the β angle is over twice as large for the substituted as for the unsubstituted ring, and the substituted pyridine ring is slightly puckered [av deviation 0.018 (2) Å], while the unsubstituted ring is nearly planar.

In general, Pd(II) and Pt(II) bipyridine complexes are *not* appreciably distorted, although packing forces may cause small distortions.^{14,15} The red form of $bpyPtCl_2$ is perfectly planar, lying on a mirror plane in the crystal.¹⁶ This favored bonding mode is accomplished by σ donation of the N-lone-pair electrons with metal-to-ligand π bonding as a stabilizing factor.

It is clear that the methyl-chloro interaction is in part responsible for the large acute angle β but is not alone sufficient to explain the large distortions.¹⁷ The unique pyramidal distortion of 2 and 3 demands that the N lone pair cannot overlap optimally with the Pd d orbitals. However, the Pd-N bond distances are the same as or shorter than those found in relatively undistorted complexes.¹⁴ Chemically, 2-4 are stable indefinitely in solution and undergo oxidative addition of Cl_2 in $CHCl_3$ without loss of the dipyrindine moiety.

Studies are currently in progress¹⁹ to delineate the mode of bonding and to ascertain the stereochemical significance of these distortions in binuclear complexes.

Acknowledgment. We are grateful to the National Science Foundation and Dow Chemical USA for partial support of this work and to Professors R. Hoffmann and L. Marzilli for their helpful comments.

Registry No. 2, 80822-40-8; 3, 79104-99-7; 4, 80822-41-9.

Supplementary Material Available: Listings of fractional coordinates for nonhydrogen atoms of complexes 2, 3, and 4 and of deviations from the best planes of the pyridine rings are available (4 pages). Ordering information is given on any current masthead page.

(13) Crystal data for 4: $C_{11}H_{10}N_2PdCl_2$; mw 347.51; monoclinic; space group $P2_1/n$; $a = 9.126$ (2), $b = 7.673$ (3), $c = 16.882$ (4) Å; $\beta = 97.91$ (2) $^\circ$; $Z = 4$, $d_c = 1.971$ g cm $^{-3}$, μ (Mo K α) 19.8 cm $^{-1}$; intensities were recorded on an Enraf Nonius CAD-4 diffractometer and merged to give 1712 unique observed reflections [$F > 3\sigma(F)$], $R = 0.023$.

(14) Distortions in related complexes¹⁵ can be correlated by calculating the dihedral angles of the central, metal-containing, five-membered ring. Average dihedral angles are less than 5° for these complexes, which denotes relatively inconsequential distortions. Average Pd-N bond distances range from 2.0-2.1 Å: S. F. Watkins, Louisiana State University, unpublished results.

(15) Deuten, K. V.; Klar, G. *Cryst. Struct. Commun.* **1976**, *5*, 387. Grdenic, D.; Kamenar, B.; Hergold-Brundic, A. *Ibid.* **1978**, *7*, 165. Neitzel, C. J.; Desiderato, R. *Ibid.* **1975**, *4*, 333. Canius, A.; Marsich, M.; Nardin, G. *Acta Crystallogr., Sect. B* **1977**, *B33*, 1669. Fenn, R. H. *J. Chem. Soc. A* **1969**, 1764. Arora, S. K.; Carter, D. E.; Fernando, Q.; Seff, K. *Acta Crystallogr., Sect. B* **1977**, *B33*, 3230.

(16) Osborn, R. S.; Rogers, D. *J. Chem. Soc., Dalton Trans.* **1974**, 1002.

(17) Slight distortions ($\beta =$ ca 2.5°) have been reported¹⁸ for dinitro-(2,9-dimethyl-1,10-phenanthroline)palladium(II).

(18) Fridrichson, J.; Mathieson, A. M.; Power, L. F. *J. Cryst. Mol. Struct.* **1971**, *1*, 333.

(19) The X-ray crystal structure of dichloro(2,9-dimethyl-1,10-phenanthroline)palladium(II) has been completed and shown to have the same degree of acute distortion: Kiefer, G. E.; Fronczek, F. R. Louisiana State University, unpublished results.